

# PHILIPS

## LED tubes

### New



# Real pros say farewell to fluorescent.

The new Philips MASTER Value LEDtube Universal T8.  
Maximum value – monumental performance.

Enjoy more ease and speed of installation with the new **Philips MasterValue LEDtube Universal T8**. As a robust and reliable universal tube, its compatible with all kinds of driver technologies. Its unique design guarantees safe 'plug and play' installation on most common electronic ballasts. And thanks to a high degree of efficiency and long service life, the MasterValue LEDtube Universal T8 is the ideal alternative to standard fluorescent tubes for all demanding lighting applications.

**REAL  
PROs**  
**REAL  
QUALITY**

## Philips MASTER Value LEDtube T8 – unique in the market

- ✓ **Universal compatibility** – compatible with all kinds of driver technologies (EM ballast, HF ballasts and direct mains)
- ✓ **Glass platform** – uniform light (large beam angle 240D – suitable for many applications)
- ✓ **Ultra high lumen package** – up to 3700 lumen
- ✓ **InstantFit technology** – for largest HF ballast compatibility, safety and ease and speed of installation

## Applications

- ✓ Office
- ✓ Industry, Warehouses and coldrooms
- ✓ Parking lots and covered car parks
- ✓ Signage
- ✓ Office & industrial facilities (walkways, stairways, storage, etc.)
- ✓ Education, retail spaces

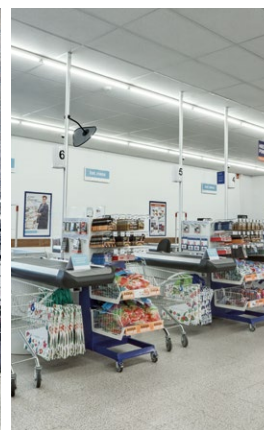
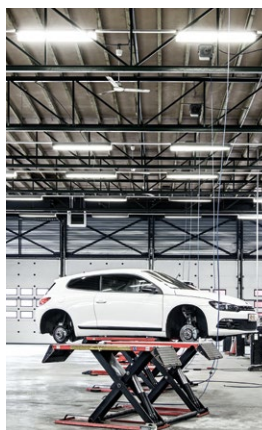
## Philips LED tubes – unique benefits

- ✓ Up to 65% more energy efficient than conventional TL-D (fluorescent) lamps
- ✓ Up to 3× longer lasting performance than conventional TL-D (fluorescent) lighting tubes
- ✓ Retrofit to existing T8 lamps on EM ballast installations
- ✓ Affordable proposition – suitable for small and medium sized businesses
- ✓ Immediate, 100% lumen output – no flickering or buzzing
- ✓ Full safety features and EM Protector safety device
- ✓ Guarantee of up to five years\*
- ✓ Easily find the right product for every area of application with the [product finder](http://www.productfinder.lighting.philips.com) and impress your customers with your expertise in all kinds of LED lighting solutions.

Click the link, scan the code or visit [www.productfinder.lighting.philips.com](http://www.productfinder.lighting.philips.com)



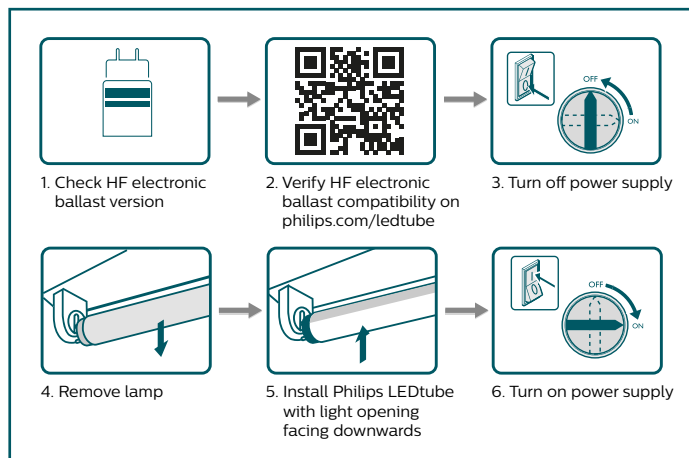
\* For warranty conditions, visit  
[www.lighting.philips.com/main/support/support/warranty](http://www.lighting.philips.com/main/support/support/warranty)



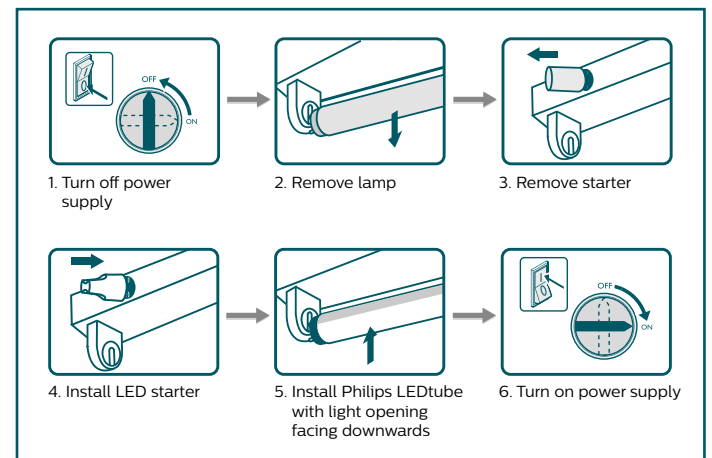
# 100 % safe installation – easier than ever before

LED tubes provide the fastest and simplest way to convert existing luminaires to LED technology. Installation is 100 % safe and convenient thanks to simple lamp-for-lamp replacement.

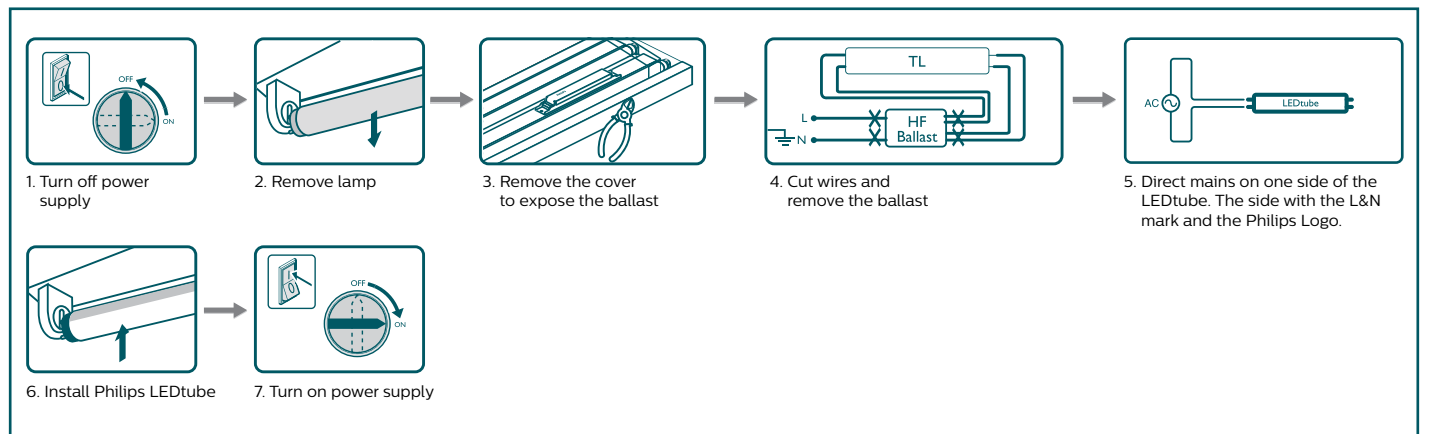
## Installation instructions for Electronic Ballast (HF)



## Installation instructions for Electro-magnetic Ballast (EM)



## Installation instructions for direct mains connection



To check if your ballast is compatible, always refer to the latest update of the Philips LEDtube compatibility on [www.philips.com/ledtube](http://www.philips.com/ledtube)

## Order information



Product Type	LED	Lumen Output	Efficacy	Beam Angle	CRI	Color Temp.	Lifetime	EEL	EOC code
<b>MASTER Value LEDtube Universal T8</b>									
MAS LEDtube VLE UN 1200mm UO 16W830 T8	16	2300	144	240	83	3000	50000	A++	73917100
MAS LEDtube VLE UN 1200mm UO 16W840 T8	16	2500	156	240	83	4000	50000	A++	73919500
MAS LEDtube VLE UN 1200mm UO 16W865 T8	16	2501	156	240	83	6500	50000	A++	73921800
MAS LEDtube VLE UN 1500mm UO 24W830 T8	24	3400	142	240	83	3000	50000	A++	73923200
MAS LEDtube VLE UN 1500mm UO 24W840 T8	24	3700	154	240	83	4000	50000	A++	73925600
MAS LEDtube VLE UN 1500mm UO 24W865 T8	24	3700	154	240	83	6500	50000	A++	73927000

